

REPAIR MANAGER

SUPPORT FOR REPAIRS AND QUALITY DATA MANAGEMENT

Interfaces to test systems

Other interfaces are implemented according to customer requirements.

- SPEA Testres Files
- HP Log records für HP Q-STATS
- Digitaltest MTS Log Files
- Marconi System 80
- Repwin ASCII Inhouse Systems
- Zehntel 850
- Teradyne Tokenlog file
- Genrad TIP
(TRACS Interface Protocol)
- VISCOM AOI
- Orbotech AOI
- Rohde & Schwarz TSx Datalogging
- Visual Control

CAD Interfaces

Data exchange with all common systems

- EDIF 2.0
- CADIF (Cadstar, Visula)
- Mentor Graphics
- Neutral File
- VeryBest
- Expedition
- TXF
- Mentor Graphics
- SPEA Software AG
- Integra
- topCAD
- Fabmaster (FATF)
- EE Designer (ALA Files)
- PADS (TECNOTRON)
- PROTEL
- ACCEL
- THEDA
- GenCAD
- Zuken CR3000 + CR5000
- HPGL (Circuit Diagram)
- Siemens
- CADENCE Allegro
- EAGLE über ASCII IF
- RSI CAMCAD-File (XML)
- Router Solutions



- **Paperless approach ensures effective repairs**
Photographic imaging of boards
- **Complete collection of inspection and repair data**
Online overview of the entire manufacturing history
- **Central data collection and management**
Via ORACLE and SQL Server databases
- **Traceability through collection of component batches**
Tracking of defects on the batch level
- **Locking mechanisms assure quality**
Segregation of defective panels
- **Flexible analysis options in real-time**
Availability of key production and quality indicators
- **Stepless expansion to full-scale MES functionality**
From incoming goods to outgoing goods

KRATZER AUTOMATION AG
Gutenbergstrasse 5
85716 Unterschleissheim / Munich
Germany

Telefon +49-89-32152-200
Telefax +49-89-32152-599
www.kratzer-automation.com
intraFACTORY@kratzer-automation.com

intraFACTORY® REPAIR MANAGER

In electronics manufacturing, the pressure to produce top quality at very low prices is greater than in practically any other market segment. Complete quality assurance is therefore the prerequisite for making products that are free of defects. Inspection and repair deliver important information on the quality of manufacturing.

But these areas, in particular, are characterized by considerable inhomogeneity: different inspection and test equipment from various manufacturers, inhouse solutions and manual inspection, and repair stations where data is either not collected at all or only collected manually. Valuable inspection, test and repair results are thus lost as feedback for the current production process.

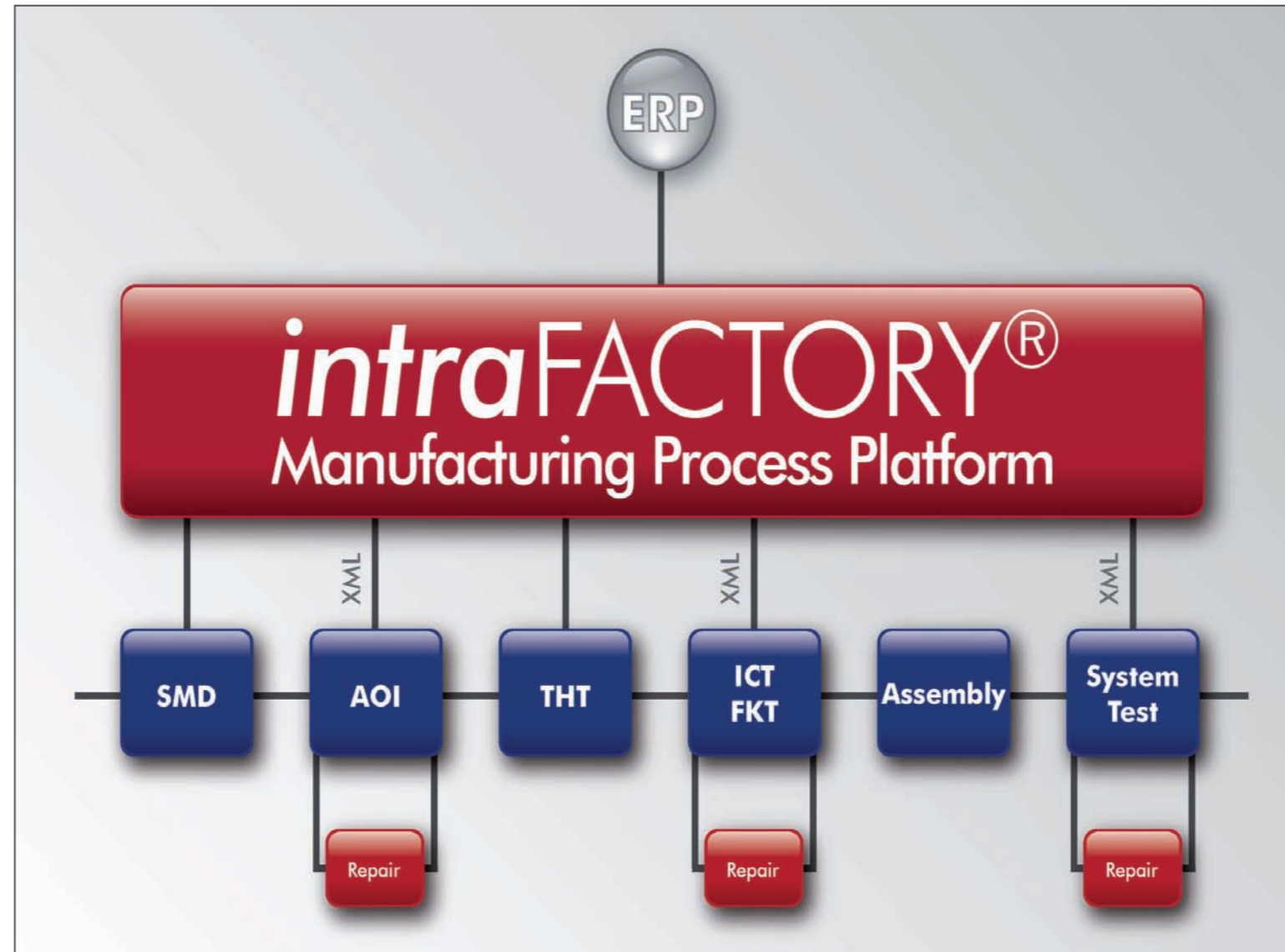
The solution

Repair Manager is an innovative solution for a fully integrated and transparent quality data management. It is a modular client/server-based monitoring and control software for process optimization.

Repair Manager integrates all inspection and test equipment, and provides a central database for all quality data, a stationary universal repair station and the collection of data on passed/failed parts using mobile devices. It can be extended from a single-station system to any number of stationary repair and analysis stations or to mobile data collection.

From support for repairs to control of manufacturing

Repair Manager is the ideal solution for companies with relatively small budgets that nonetheless need efficient, reliable quality data management. Thanks to its modular structure, the system can be extended into a production control system that integrates all inspection, test and repair operations all the way from goods receiving to the finished product.

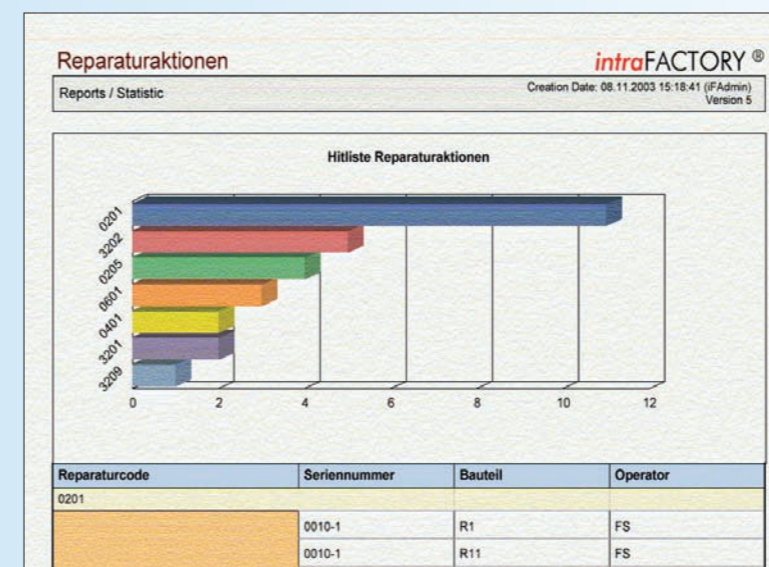
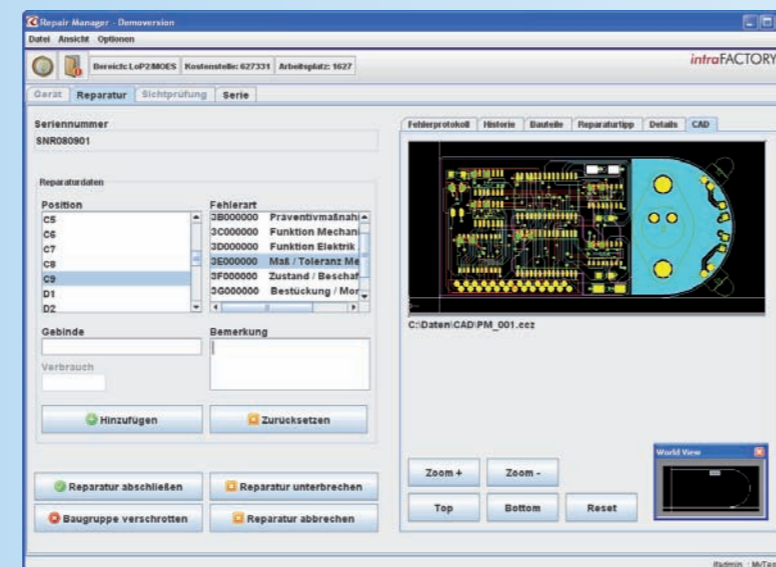
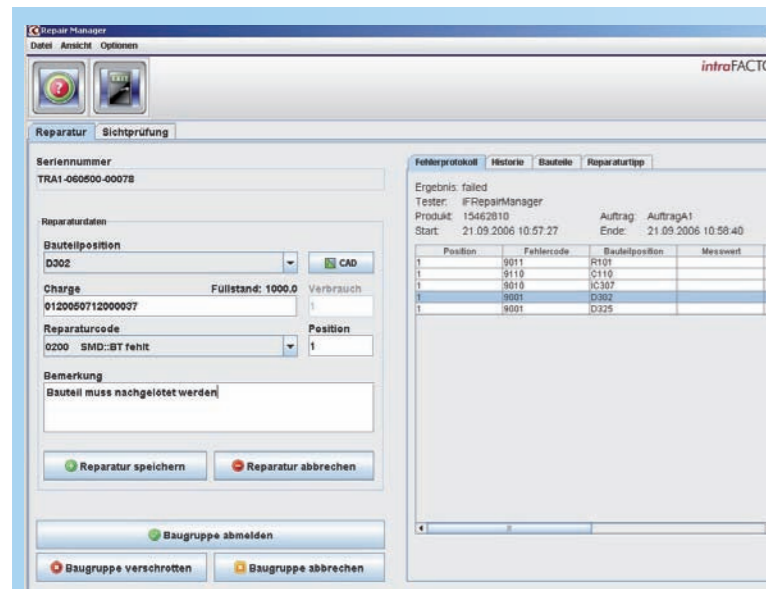


Features

- Complete data transfer from all inspection, test and repair equipment through connection to a central network
- Connection of inhouse solutions, manual inspection and test equipment and repair stations
- Replacement of hand-written records by electronic data collection (entered via a touchscreen monitor)
- Combination of local tester databases to form a central quality database
- Standardization of charts and reports
- Use of photos for repair and process monitoring
- Selective monitoring of production quality with direct feedback to all relevant stations
- Alerting functions in the event of process fluctuations and manufacturing problems; locking mechanisms if an inspection stage is omitted.
- Process qualification through closed control loops

Expansion to full-scale MES functionality

The intraFACTORY Repair Manager is a module of the intraFACTORY Shop Floor Edition. By using other standard modules – such as Material manager, Traceability, Process locking (Advanced Process Control APC), and Order tracking with online reporting – you can establish a custom manufacturing execution system (MES,) step by step, that extends as far as outgoing goods and shipping.



Screenshots:

- Left: The Repair Manager's input screen
- Center: Example of graphical support for repairs
- Right: Report: Repairs by frequency